

## Girl Scout Cookie Forum

Lab ID: 1907149-01

### Client Info Here

Harvest / Process Lot:  
METRC Batch ID: **Client Info Here**  
METRC Sample Tag:  
Date Sampled: 07/29/19  
Date Printed: 08/1/19

## Potency Analysis

Analytical Method: De Backer, Journal of Chromatography b.2009. 11.004 -  
SOP 19 and 20

Cannabinoids (% weight)		Moisture Adjusted	Notes
THCA	22.1	24.8	
delta 9-THC	0.423	0.476	
delta 8-THC	< LOQ	< LOQ	
CBGA	0.872	0.980	
CBDA	0.136	0.153	
CBD	< LOQ	< LOQ	
CBN	< LOQ	< LOQ	
CBG	0.679	0.763	
CBC	< LOQ	< LOQ	

**Total THC**  
**22.2 %**

**Total CBD**  
**0.134 %**

<LOQ - Results below the Limit of Quantitation

Acid form of THC/CBD are decarboxylated by heat, lose 12% of original mass as CO2. Result = \*bioactive\*

"Total" Cannabinoid accounts for decarboxylation and moisture content. Total THC =  $[(THCA \times 0.877) + \Delta 9THC] / (100\% - MC)$

## Moisture

Analysis Method/SOP: SOP 7

Moisture: 11.0 %

## Water Activity

Analysis Method/SOP: SOP 8

Results above 0.65 fail state testing requirements and will be highlighted **Red**.

Water Activity: 0.523

PASS



**Erik Werstler**  
Lab Director

## Girl Scout Cookie Forum

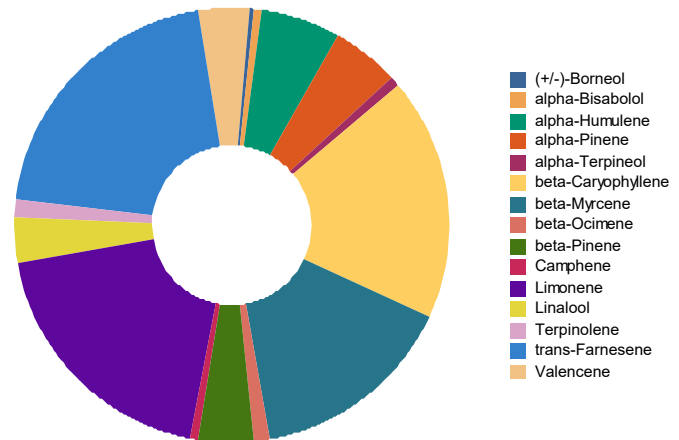
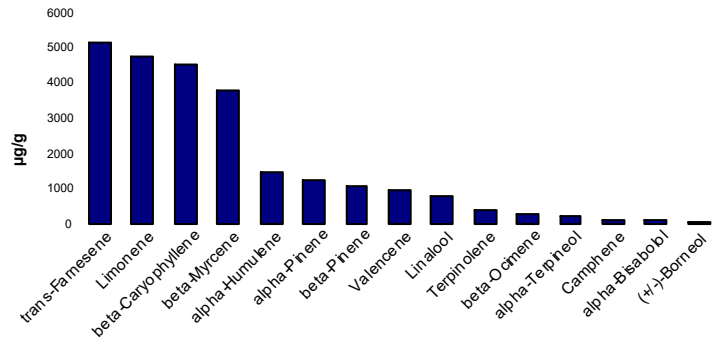
Client Info Here

Laboratory ID: 1907149-01

### Terpene Test Report

Analysis Method/SOP: Terp

Analyte	Result µg/g	Result %
alpha-Bisabolol	133.7	0.01337
Camphene	146.7	0.01467
Camphor	< LOQ	< LOQ
delta-3-Carene	< LOQ	< LOQ
beta-Caryophyllene	4555	0.4555
Caryophyllene Oxide	< LOQ	< LOQ
p-Cymene	< LOQ	< LOQ
Eucalyptol	< LOQ	< LOQ
Geraniol	< LOQ	< LOQ
Geranyl acetate	< LOQ	< LOQ
Guaiol	< LOQ	< LOQ
alpha-Humulene	1469	0.1469
Isoborneol	< LOQ	< LOQ
Isopulegol	< LOQ	< LOQ
Limonene	4783	0.4783
Linalool	810.5	0.08105
beta-Myrcene	3784	0.3784
trans-Nerolidol	< LOQ	< LOQ
Ocimene	< LOQ	< LOQ
alpha-Pinene	1239	0.1239
beta-Pinene	1068	0.1068
Pulegone	< LOQ	< LOQ
Sabinene	< LOQ	< LOQ
gamma-Terpinene	< LOQ	< LOQ
alpha-Terpinene	< LOQ	< LOQ
Terpinolene	391.4	0.03914
Valencene	973.9	0.09739
Nerol	< LOQ	< LOQ
L-(-)-Fenchone	< LOQ	< LOQ
cis-Nerolidol	< LOQ	< LOQ
(+/-)-Borneol	56.82	0.005682
(+/-)-Fenchone	< LOQ	< LOQ
alpha-Phellandrene	< LOQ	< LOQ




**Erik Werstler**  
Lab Director

## Girl Scout Cookie Forum

Client Info Here

Laboratory ID: 1907149-01

Analysis Method/SOP: Terp

Analyte	Result µg/g	Result %
beta-Ocimene	291.7	0.02917
cis-Farnesene	< LOQ	< LOQ
Menthol	< LOQ	< LOQ
trans-beta-Ocimene	< LOQ	< LOQ
trans-Farnesene	5132	0.5132
alpha-Terpineol	234.6	0.02346
gamma-Terpineol	< LOQ	< LOQ
<b>Total Terpenes</b>	<b>25600</b>	<b>2.560</b>



**Erik Werstler**  
Lab Director

## Girl Scout Cookie Forum

Client Info Here

Laboratory ID: 1907149-01

### Girl Scout Cookie Forum

Client Info Here

Date Sampled: 07/29/19 08:49

Date Accepted: 07/29/19

Results Valid Until: 07/28/20

Sample ID: 1907149-01

Matrix: Useable Marijuana

M #:

### Pesticide Analysis in PPM

Date/Time Extracted: 07/30/19 12:32

Date/Time Analyzed: 07/31/19 01:53

Analysis Method/SOP: SOP 33

Instrument: Selene

Batch Identification: B19G144

Analyte	Result	Action Level	LOQ	Type
Abamectin	< LOQ	0.5	0.1976	Avermectin insecticide
Acephate	< LOQ	0.4	0.1580	Organophosphate Insecticide
Acequinocyl	< LOQ	2	0.7902	Quinoline insecticide
Acetamiprid	< LOQ	0.2	0.07902	Neonicotinoid insecticide
Aldicarb	< LOQ	0.4	0.1580	Carbamate insecticide
Azoxystrobin	< LOQ	0.2	0.07902	Strobin fungicide
Bifenazate	< LOQ	0.2	0.07902	Carbazate miticide
Bifenthrin	< LOQ	0.2	0.07902	Pyrethroid insecticide
Boscalid	< LOQ	0.4	0.1580	Carboxamide fungicide
Carbaryl	< LOQ	0.2	0.07902	Carbamate insecticide
Carbofuran	< LOQ	0.2	0.07902	Carbamate insecticide
Chlorantraniliprole	< LOQ	0.2	0.07902	Anthranilic diamide insecticide
Chlorfenapyr	< LOQ	1	0.3951	Pyrrole insecticide
Chlorpyrifos	< LOQ	0.2	0.07902	Organophosphate Insecticide
Clofentezine	< LOQ	0.2	0.07902	Tetrazine miticide
Cyfluthrin	< LOQ	1	0.3951	Pyrethroid insecticide
Cypermethrin	< LOQ	1	0.3951	Pyrethroid insecticide
Daminozide	< LOQ	1	0.3951	Plant growth regulator
DDVP (Dichlorvos)	< LOQ	1	0.3951	Organophosphate insecticide
Diazinon	< LOQ	0.2	0.07902	Organophosphate Insecticide
Dimethoate	< LOQ	0.2	0.07902	Organophosphate insecticide
Ethoprophos	< LOQ	0.2	0.07902	Organophosphate insecticide
Etofenprox	< LOQ	0.4	0.1580	Pyrethroid insecticide
Etoxazole	< LOQ	0.2	0.07902	Oxazoline insecticide
Fenoxycarb	< LOQ	0.2	0.07902	Carbamate insecticide
Fenpyroximate	< LOQ	0.4	0.1580	Pyrazolium miticide
Fipronil	< LOQ	0.4	0.1580	Pyrazole insecticide
Fonicamid	< LOQ	1	0.3951	Pyridinecarboxamide insecticide



**Erik Werstler**

Lab Director

## Girl Scout Cookie Forum

Client Info Here

Laboratory ID: 1907149-01

### Girl Scout Cookie Forum

Client Info Here

Date Sampled: 07/29/19 08:49

Date Accepted: 07/29/19

Results Valid Until: 07/28/20

Sample ID: 1907149-01

Matrix: Useable Marijuana

M #:

### Pesticide Analysis in PPM

Date/Time Extracted: 07/30/19 12:32

Date/Time Analyzed: 07/31/19 01:53

Analysis Method/SOP: SOP 33

Instrument: Selene

Batch Identification: B19G144

Analyte	Result	Action Level	LOQ	Type
Fludioxonil	< LOQ	0.4	0.1580	Benzodioxole fungicide
Hexythiazox	< LOQ	1	0.3951	Heterocyclic miticide
Imazalil	< LOQ	0.2	0.07902	Imidazole fungicide
Imidacloprid	< LOQ	0.4	0.1580	Neonicotinoid insectide
Kresoxim-methyl	< LOQ	0.4	0.1580	Strobilurin fungicide
Malathion	< LOQ	0.2	0.07902	Organophosphate insecticide
Metalaxyl	< LOQ	0.2	0.07902	Benzenoid fungicide
Methiocarb	< LOQ	0.2	0.07902	Carbamate insecticide
Methomyl	< LOQ	0.4	0.1580	Carbamate insecticide
Methyl parathion	< LOQ	0.2	0.07902	Organophosphate insecticide
MGK-264	< LOQ	0.2	0.07902	Pesticide synergist
Myclobutanil	< LOQ	0.2	0.07902	Triazole fungicide
Naled	< LOQ	0.5	0.1976	Organophosphate insecticide
Oxamyl	< LOQ	1	0.3951	Carbamate insecticide
Paclobutrazol	< LOQ	0.4	0.1580	Triazole fungicide
Permethrins	< LOQ	0.2	0.07902	Pyrethroid insecticide
Phosmet	< LOQ	0.2	0.07902	Organophosphate insecticide
Piperonyl butoxide	0.9037	2	0.7902	Pesticide synergist
Prallethrin	< LOQ	0.2	0.07902	Pyrethroid insecticide
Propiconazole	< LOQ	0.4	0.1580	Triazole fungicide
Propoxur	< LOQ	0.2	0.07902	Carbamate insecticide
Pyrethrins	< LOQ	1	0.3951	Pyrethroid insecticide
Pyridaben	< LOQ	0.2	0.07902	Pyridazinone insecticide
Spinosad	< LOQ	0.2	0.07902	Spinosyn insecticide
Spiromesifen	< LOQ	0.2	0.07902	Keto-enol insecticide
Spirotetramat	< LOQ	0.2	0.07902	Keto-enol insecticide
Spiroxamine	< LOQ	0.4	0.1580	Spiroketalamine fungicide
Tebuconazole	< LOQ	0.4	0.1580	Triazole fungicide



Erik Werstler

Lab Director

**Girl Scout Cookie Forum**

Client Info Here

Laboratory ID: 1907149-01

**Girl Scout Cookie Forum**

Client Info Here

Date Sampled: 07/29/19 08:49

Date Accepted: 07/29/19

Results Valid Until: 07/28/20

Sample ID: 1907149-01

Matrix: Useable Marijuana

M #:

**Pesticide Analysis in PPM**

Date/Time Extracted: 07/30/19 12:32

Date/Time Analyzed: 07/31/19 01:53

Analysis Method/SOP: SOP 33

Instrument: Selene

Batch Identification: B19G144

Analyte	Result	Action Level	LOQ	Type
Thiacloprid	< LOQ	0.2	0.07902	Neonicotinoid insecticide
Thiamethoxam	< LOQ	0.2	0.07902	Neonicotinoid insecticide
Trifloxystrobin	< LOQ	0.2	0.07902	Strobin fungicide

<LOQ - Results below the Limit of Quantitation - Compound not detected

Results above the Action Level fail state testing requirements and will be highlighted Red.



**Erik Werstler**

Lab Director

## Girl Scout Cookie Forum

Client Info Here

Laboratory ID: 1907149-01

## Quality Control Potency

Batch: B19G140 - Potency

### Blank(B19G140-BLK1)

Analyte	Result	LOQ	Units	%Recovery Limits	Extracted	Analyzed	Notes
THCA	< LOQ	0.0460	%		07/29/19 15:38	07/29/19 22:23	
delta 9-THC	< LOQ	0.0460	%		07/29/19 15:38	07/29/19 22:23	
CBGA	< LOQ	0.0460	%		07/29/19 15:38	07/29/19 22:23	
CBDA	< LOQ	0.0460	%		07/29/19 15:38	07/29/19 22:23	
CBD	< LOQ	0.0460	%		07/29/19 15:38	07/29/19 22:23	
CBN	< LOQ	0.0460	%		07/29/19 15:38	07/29/19 22:23	
CBG	< LOQ	0.0460	%		07/29/19 15:38	07/29/19 22:23	
delta 8-THC	< LOQ	0.0460	%		07/29/19 15:38	07/29/19 22:23	
CBC	< LOQ	0.0460	%		07/29/19 15:38	07/29/19 22:23	

### LCS(B19G140-BS1)

Analyte	% Recovery	LOQ	Units	%Recovery Limits	Extracted	Analyzed	Notes
THCA	105	0.0491	%	85-115	07/29/19 15:38	07/29/19 22:36	
delta 9-THC	106	0.0491	%	85-115	07/29/19 15:38	07/29/19 22:36	
CBDA	106	0.0491	%	85-115	07/29/19 15:38	07/29/19 22:36	
CBD	110	0.0491	%	85-115	07/29/19 15:38	07/29/19 22:36	



**Erik Werstler**  
Lab Director

## Girl Scout Cookie Forum

Client Info Here

Laboratory ID: 1907149-01

## Quality Control Pesticide Analysis

Batch: B19G144 - Pest

### Blank(B19G144-BLK1)

Analyte	Result	LOQ	Units	%Recovery Limits	Extracted	Analyzed	Notes
Abamectin	< LOQ	0.3841	ppm		07/30/19 12:32	07/30/19 18:59	
Acephate	< LOQ	0.3073	ppm		07/30/19 12:32	07/30/19 18:59	
Acequinocyl	< LOQ	1.536	ppm		07/30/19 12:32	07/30/19 18:59	
Acetamiprid	< LOQ	0.1536	ppm		07/30/19 12:32	07/30/19 18:59	
Aldicarb	< LOQ	0.3073	ppm		07/30/19 12:32	07/30/19 18:59	
Azoxystrobin	< LOQ	0.1536	ppm		07/30/19 12:32	07/30/19 18:59	
Bifenazate	< LOQ	0.1536	ppm		07/30/19 12:32	07/30/19 18:59	
Bifenthrin	< LOQ	0.1536	ppm		07/30/19 12:32	07/30/19 18:59	
Boscalid	< LOQ	0.3073	ppm		07/30/19 12:32	07/30/19 18:59	
Carbaryl	< LOQ	0.1536	ppm		07/30/19 12:32	07/30/19 18:59	
Carbofuran	< LOQ	0.1536	ppm		07/30/19 12:32	07/30/19 18:59	
Chlorantraniliprole	< LOQ	0.1536	ppm		07/30/19 12:32	07/30/19 18:59	
Chlorfenapyr	< LOQ	0.7682	ppm		07/30/19 12:32	07/30/19 18:59	
Chlorpyrifos	< LOQ	0.1536	ppm		07/30/19 12:32	07/30/19 18:59	
Clofentezine	< LOQ	0.1536	ppm		07/30/19 12:32	07/30/19 18:59	
Cyfluthrin	< LOQ	0.7682	ppm		07/30/19 12:32	07/30/19 18:59	
Cypermethrin	< LOQ	0.7682	ppm		07/30/19 12:32	07/30/19 18:59	
Daminozide	< LOQ	0.7682	ppm		07/30/19 12:32	07/30/19 18:59	
DDVP (Dichlorvos)	< LOQ	0.7682	ppm		07/30/19 12:32	07/30/19 18:59	
Diazinon	< LOQ	0.1536	ppm		07/30/19 12:32	07/30/19 18:59	
Dimethoate	< LOQ	0.1536	ppm		07/30/19 12:32	07/30/19 18:59	
Ethoprophos	< LOQ	0.1536	ppm		07/30/19 12:32	07/30/19 18:59	
Etofenprox	< LOQ	0.3073	ppm		07/30/19 12:32	07/30/19 18:59	
Etoxazole	< LOQ	0.1536	ppm		07/30/19 12:32	07/30/19 18:59	
Fenoxycarb	< LOQ	0.1536	ppm		07/30/19 12:32	07/30/19 18:59	
Fenpyroximate	< LOQ	0.3073	ppm		07/30/19 12:32	07/30/19 18:59	
Fipronil	< LOQ	0.3073	ppm		07/30/19 12:32	07/30/19 18:59	
Fonicamid	< LOQ	0.7682	ppm		07/30/19 12:32	07/30/19 18:59	
Fludioxonil	< LOQ	0.3073	ppm		07/30/19 12:32	07/30/19 18:59	
Hexythiazox	< LOQ	0.7682	ppm		07/30/19 12:32	07/30/19 18:59	
Imazalil	< LOQ	0.1536	ppm		07/30/19 12:32	07/30/19 18:59	
Imidacloprid	< LOQ	0.3073	ppm		07/30/19 12:32	07/30/19 18:59	
Kresoxim-methyl	< LOQ	0.3073	ppm		07/30/19 12:32	07/30/19 18:59	
Malathion	< LOQ	0.1536	ppm		07/30/19 12:32	07/30/19 18:59	



**Erik Werstler**  
Lab Director



## Girl Scout Cookie Forum

Client Info Here

Laboratory ID: 1907149-01

## Quality Control Pesticide Analysis (Continued)

Batch: B19G144 - Pest (Continued)

### Blank(B19G144-BLK1)

Analyte	Result	LOQ	Units	%Recovery Limits	Extracted	Analyzed	Notes
Metalaxyl	< LOQ	0.1536	ppm		07/30/19 12:32	07/30/19 18:59	
Methiocarb	< LOQ	0.1536	ppm		07/30/19 12:32	07/30/19 18:59	
Methomyl	< LOQ	0.3073	ppm		07/30/19 12:32	07/30/19 18:59	
Methyl parathion	< LOQ	0.1536	ppm		07/30/19 12:32	07/30/19 18:59	
MGK-264	< LOQ	0.1536	ppm		07/30/19 12:32	07/30/19 18:59	
Myclobutanil	< LOQ	0.1536	ppm		07/30/19 12:32	07/30/19 18:59	
Naled	< LOQ	0.3841	ppm		07/30/19 12:32	07/30/19 18:59	
Oxamyl	< LOQ	0.7682	ppm		07/30/19 12:32	07/30/19 18:59	
Paclobutrazol	< LOQ	0.3073	ppm		07/30/19 12:32	07/30/19 18:59	
Permethrins	< LOQ	0.1536	ppm		07/30/19 12:32	07/30/19 18:59	
Phosmet	< LOQ	0.1536	ppm		07/30/19 12:32	07/30/19 18:59	
Piperonyl butoxide	< LOQ	1.536	ppm		07/30/19 12:32	07/30/19 18:59	
Prallethrin	< LOQ	0.1536	ppm		07/30/19 12:32	07/30/19 18:59	
Propiconazole	< LOQ	0.3073	ppm		07/30/19 12:32	07/30/19 18:59	
Propoxur	< LOQ	0.1536	ppm		07/30/19 12:32	07/30/19 18:59	
Pyrethrins	< LOQ	0.7682	ppm		07/30/19 12:32	07/30/19 18:59	
Pyridaben	< LOQ	0.1536	ppm		07/30/19 12:32	07/30/19 18:59	
Spinosad	< LOQ	0.1536	ppm		07/30/19 12:32	07/30/19 18:59	
Spiromesifen	< LOQ	0.1536	ppm		07/30/19 12:32	07/30/19 18:59	
Spirotetramat	< LOQ	0.1536	ppm		07/30/19 12:32	07/30/19 18:59	
Spiroxamine	< LOQ	0.3073	ppm		07/30/19 12:32	07/30/19 18:59	
Tebuconazole	< LOQ	0.3073	ppm		07/30/19 12:32	07/30/19 18:59	
Thiacloprid	< LOQ	0.1536	ppm		07/30/19 12:32	07/30/19 18:59	
Thiamethoxam	< LOQ	0.1536	ppm		07/30/19 12:32	07/30/19 18:59	
Trifloxystrobin	< LOQ	0.1536	ppm		07/30/19 12:32	07/30/19 18:59	

### LCS(B19G144-BS1)

Analyte	% Recovery	LOQ	Units	%Recovery Limits	Extracted	Analyzed	Notes
Abamectin	141	0.2711	ppm	70-130	07/30/19 12:32	07/30/19 18:38	Q3
Acephate	111	0.2169	ppm	70-130	07/30/19 12:32	07/30/19 18:38	
Acequinocyl	99.2	1.084	ppm	70-130	07/30/19 12:32	07/30/19 18:38	
Acetamiprid	106	0.1084	ppm	70-130	07/30/19 12:32	07/30/19 18:38	
Aldicarb	114	0.2169	ppm	70-130	07/30/19 12:32	07/30/19 18:38	
Azoxystrobin	107	0.1084	ppm	70-130	07/30/19 12:32	07/30/19 18:38	
Bifenazate	126	0.1084	ppm	70-130	07/30/19 12:32	07/30/19 18:38	



**Erik Werstler**  
Lab Director

## Girl Scout Cookie Forum

Client Info Here

Laboratory ID: 1907149-01

## Quality Control Pesticide Analysis (Continued)

Batch: B19G144 - Pest (Continued)

LCS(B19G144-BS1)							
Analyte	% Recovery	LOQ	Units	%Recovery Limits	Extracted	Analyzed	Notes
Bifenthrin	113	0.1084	ppm	70-130	07/30/19 12:32	07/30/19 18:38	
Boscalid	114	0.2169	ppm	70-130	07/30/19 12:32	07/30/19 18:38	
Carbaryl	113	0.1084	ppm	70-130	07/30/19 12:32	07/30/19 18:38	
Carbofuran	111	0.1084	ppm	70-130	07/30/19 12:32	07/30/19 18:38	
Chlorantraniliprole	120	0.1084	ppm	70-130	07/30/19 12:32	07/30/19 18:38	
Chlorfenapyr	96.0	0.5422	ppm	70-130	07/30/19 12:32	07/30/19 18:38	
Chlorpyrifos	106	0.1084	ppm	70-130	07/30/19 12:32	07/30/19 18:38	
Clofentezine	104	0.1084	ppm	70-130	07/30/19 12:32	07/30/19 18:38	
Cyfluthrin	117	0.5422	ppm	70-130	07/30/19 12:32	07/30/19 18:38	
Cypermethrin	122	0.5422	ppm	70-130	07/30/19 12:32	07/30/19 18:38	
Daminozide	129	0.5422	ppm	70-130	07/30/19 12:32	07/30/19 18:38	
DDVP (Dichlorvos)	101	0.5422	ppm	70-130	07/30/19 12:32	07/30/19 18:38	
Diazinon	108	0.1084	ppm	70-130	07/30/19 12:32	07/30/19 18:38	
Dimethoate	112	0.1084	ppm	70-130	07/30/19 12:32	07/30/19 18:38	
Ethoprophos	112	0.1084	ppm	70-130	07/30/19 12:32	07/30/19 18:38	
Etofenprox	122	0.2169	ppm	70-130	07/30/19 12:32	07/30/19 18:38	
Etoxazole	107	0.1084	ppm	70-130	07/30/19 12:32	07/30/19 18:38	
Fenoxycarb	115	0.1084	ppm	70-130	07/30/19 12:32	07/30/19 18:38	
Fenpyroximate	127	0.2169	ppm	70-130	07/30/19 12:32	07/30/19 18:38	
Fipronil	116	0.2169	ppm	70-130	07/30/19 12:32	07/30/19 18:38	
Flonicamid	112	0.5422	ppm	70-130	07/30/19 12:32	07/30/19 18:38	
Fludioxonil	117	0.2169	ppm	70-130	07/30/19 12:32	07/30/19 18:38	
Hexythiazox	112	0.5422	ppm	70-130	07/30/19 12:32	07/30/19 18:38	
Imazalil	110	0.1084	ppm	70-130	07/30/19 12:32	07/30/19 18:38	
Imidacloprid	114	0.2169	ppm	70-130	07/30/19 12:32	07/30/19 18:38	
Kresoxim-methyl	113	0.2169	ppm	70-130	07/30/19 12:32	07/30/19 18:38	
Malathion	111	0.1084	ppm	70-130	07/30/19 12:32	07/30/19 18:38	
Metalaxyl	117	0.1084	ppm	70-130	07/30/19 12:32	07/30/19 18:38	
Methiocarb	117	0.1084	ppm	70-130	07/30/19 12:32	07/30/19 18:38	
Methomyl	111	0.2169	ppm	70-130	07/30/19 12:32	07/30/19 18:38	
Methyl parathion	89.9	0.1084	ppm	70-130	07/30/19 12:32	07/30/19 18:38	
MGK-264	100	0.1084	ppm	70-130	07/30/19 12:32	07/30/19 18:38	
Myclobutanil	107	0.1084	ppm	70-130	07/30/19 12:32	07/30/19 18:38	
Naled	112	0.2711	ppm	70-130	07/30/19 12:32	07/30/19 18:38	



**Erik Werstler**  
Lab Director

## Girl Scout Cookie Forum

Client Info Here

Laboratory ID: 1907149-01

## Quality Control

### Pesticide Analysis (Continued)

Batch: B19G144 - Pest (Continued)

**LCS(B19G144-BS1)**

Analyte	% Recovery	LOQ	Units	%Recovery Limits	Extracted	Analyzed	Notes
Oxamyl	106	0.5422	ppm	70-130	07/30/19 12:32	07/30/19 18:38	
Paclobutrazol	110	0.2169	ppm	70-130	07/30/19 12:32	07/30/19 18:38	
Permethrins	123	0.1084	ppm	70-130	07/30/19 12:32	07/30/19 18:38	
Phosmet	114	0.1084	ppm	70-130	07/30/19 12:32	07/30/19 18:38	
Piperonyl butoxide	115	1.084	ppm	50-130	07/30/19 12:32	07/30/19 18:38	
Prallethrin	89.6	0.1084	ppm	70-130	07/30/19 12:32	07/30/19 18:38	
Propiconazole	109	0.2169	ppm	70-130	07/30/19 12:32	07/30/19 18:38	
Propoxur	112	0.1084	ppm	70-130	07/30/19 12:32	07/30/19 18:38	
Pyrethrins	116	0.5422	ppm	70-130	07/30/19 12:32	07/30/19 18:38	
Pyridaben	124	0.1084	ppm	70-130	07/30/19 12:32	07/30/19 18:38	
Spinosad	119	0.1084	ppm	70-130	07/30/19 12:32	07/30/19 18:38	
Spiromesifen	101	0.1084	ppm	70-130	07/30/19 12:32	07/30/19 18:38	
Spirotetramat	119	0.1084	ppm	70-130	07/30/19 12:32	07/30/19 18:38	
Spiroxamine	112	0.2169	ppm	70-130	07/30/19 12:32	07/30/19 18:38	
Tebuconazole	112	0.2169	ppm	70-130	07/30/19 12:32	07/30/19 18:38	
Thiacloprid	107	0.1084	ppm	70-130	07/30/19 12:32	07/30/19 18:38	
Thiamethoxam	115	0.1084	ppm	70-130	07/30/19 12:32	07/30/19 18:38	
Trifloxystrobin	87.4	0.1084	ppm	70-130	07/30/19 12:32	07/30/19 18:38	



**Erik Werstler**  
Lab Director

## Girl Scout Cookie Forum

Client Info Here

Laboratory ID: 1907149-01

## Quality Control Terpene Analysis

Batch: B19G152 - Terp

### Blank(B19G152-BLK1)

Analyte	Result	LOQ	Units	%Recovery Limits	Extracted	Analyzed	Notes
alpha-Bisabolol	< LOQ	0.003409	%		07/31/19 12:29	07/31/19 14:26	
Camphene	< LOQ	0.003409	%		07/31/19 12:29	07/31/19 14:26	
Camphor	< LOQ	0.003409	%		07/31/19 12:29	07/31/19 14:26	
delta-3-Carene	< LOQ	0.003409	%		07/31/19 12:29	07/31/19 14:26	
beta-Caryophyllene	< LOQ	0.003409	%		07/31/19 12:29	07/31/19 14:26	
Caryophyllene Oxide	< LOQ	0.003409	%		07/31/19 12:29	07/31/19 14:26	
p-Cymene	< LOQ	0.003409	%		07/31/19 12:29	07/31/19 14:26	
Eucalyptol	< LOQ	0.003409	%		07/31/19 12:29	07/31/19 14:26	
Geraniol	< LOQ	0.003409	%		07/31/19 12:29	07/31/19 14:26	
Geranyl acetate	< LOQ	0.003409	%		07/31/19 12:29	07/31/19 14:26	
Guaiol	< LOQ	0.003409	%		07/31/19 12:29	07/31/19 14:26	
alpha-Humulene	< LOQ	0.003409	%		07/31/19 12:29	07/31/19 14:26	
Isoborneol	< LOQ	0.003409	%		07/31/19 12:29	07/31/19 14:26	
Isopulegol	< LOQ	0.003409	%		07/31/19 12:29	07/31/19 14:26	
Limonene	< LOQ	0.003409	%		07/31/19 12:29	07/31/19 14:26	
Linalool	< LOQ	0.003409	%		07/31/19 12:29	07/31/19 14:26	
beta-Myrcene	< LOQ	0.003409	%		07/31/19 12:29	07/31/19 14:26	
trans-Nerolidol	< LOQ	0.003409	%		07/31/19 12:29	07/31/19 14:26	
Ocimene	< LOQ	0.003409	%		07/31/19 12:29	07/31/19 14:26	
alpha-Pinene	< LOQ	0.003409	%		07/31/19 12:29	07/31/19 14:26	
beta-Pinene	< LOQ	0.003409	%		07/31/19 12:29	07/31/19 14:26	
Pulegone	< LOQ	0.003409	%		07/31/19 12:29	07/31/19 14:26	
Sabinene	< LOQ	0.003409	%		07/31/19 12:29	07/31/19 14:26	
gamma-Terpinene	< LOQ	0.003409	%		07/31/19 12:29	07/31/19 14:26	
alpha-Terpinene	< LOQ	0.003409	%		07/31/19 12:29	07/31/19 14:26	
Terpinolene	< LOQ	0.003409	%		07/31/19 12:29	07/31/19 14:26	
Valencene	< LOQ	0.003409	%		07/31/19 12:29	07/31/19 14:26	
Nerol	< LOQ	0.003409	%		07/31/19 12:29	07/31/19 14:26	
L-(-)-Fenchone	< LOQ	0.003409	%		07/31/19 12:29	07/31/19 14:26	
cis-Nerolidol	< LOQ	0.003409	%		07/31/19 12:29	07/31/19 14:26	
(+/-)-Borneol	< LOQ	0.003409	%		07/31/19 12:29	07/31/19 14:26	
(+/-)-Fenchone	< LOQ	0.003409	%		07/31/19 12:29	07/31/19 14:26	
alpha-Phellandrene	< LOQ	0.003409	%		07/31/19 12:29	07/31/19 14:26	
beta-Ocimene	< LOQ	0.003409	%		07/31/19 12:29	07/31/19 14:26	



**Erik Werstler**  
Lab Director

## Girl Scout Cookie Forum

Client Info Here

Laboratory ID: 1907149-01

## Quality Control

### Terpene Analysis (Continued)

**Batch: B19G152 - Terp (Continued)**

**Blank(B19G152-BLK1)**

Analyte	Result	LOQ	Units	%Recovery Limits	Extracted	Analyzed	Notes
cis-Farnesene	< LOQ	0.003409	%		07/31/19 12:29	07/31/19 14:26	
Menthol	< LOQ	0.003409	%		07/31/19 12:29	07/31/19 14:26	
trans-beta-Ocimene	< LOQ	0.003409	%		07/31/19 12:29	07/31/19 14:26	
trans-Farnesene	< LOQ	0.003409	%		07/31/19 12:29	07/31/19 14:26	
alpha-Terpineol	< LOQ	0.003409	%		07/31/19 12:29	07/31/19 14:26	
gamma-Terpineol	< LOQ	0.003409	%		07/31/19 12:29	07/31/19 14:26	

**Batch: B19G154 - Moisture Content**

**Blank(B19G154-BLK1)**

Analyte	Result	LOQ	Units	%Recovery Limits	Extracted	Analyzed	Notes
Percent Moisture	0.120	0.00	%		07/31/19 20:39	07/31/19 20:39	

**LCS(B19G154-BS1)**

Analyte	% Recovery	LOQ	Units	%Recovery Limits	Extracted	Analyzed	Notes
Percent Moisture	103	0.00	%	70-130	07/31/19 20:39	07/31/19 20:39	

**Batch: B19G155 - WA**

**Blank(B19G155-BLK1)**

Analyte	Result	LOQ	Units	%Recovery Limits	Extracted	Analyzed	Notes
Water Activity	0.456	0.328	AW		07/31/19 20:38	07/31/19 20:38	



**Erik Werstler**  
Lab Director

---

## Girl Scout Cookie Forum

Client Info Here

Laboratory ID: 1907149-01

---

### Notes and Definitions

- B Analyte detected in method blank, but not associated samples.
  - B2 Analyte detected in sample and associate method blank.
  - C Interference due to co-elution.
  - D Initial result exceeded calibration range, reported data are based on analysis of a dilution.
  - H Non-homogenous sample matrix affecting RPD and/or QC.
  - I Manual Integration was performed.
  - L Duplicate sample relative percent difference (RPD) exceeds QC limits.
  - M Anomalous results due to matrix interference
  - P Peaks manually split.
  - Q1 QC out of limits but still ok
  - Q2 Quality Control outside QC limits. Data considered estimate.
  - Q3 CCV was above the acceptance criteria. Non-detect samples are considered acceptable.
  - Q4 CCV was below the acceptance criteria, however the sample still exceeds the regulatory limit.
  - R Marginal Exceedence.
  - U Reported result is an estimate. The analyte was detected above the calibration range.
  - X Problems with initial analysis, reported data are from reinjection of prepared sample.
- <LOQ - Results below the Limit of Quantitation - Compound not detected



**Erik Werstler**  
Lab Director